

# Together we can make a difference

Congratulations, your application to Co-op Food Share has been successful and you've been matched with a local store!

## Connecting with your partner store(s)

The store manager will be in touch soon to arrange a meeting to agree:

- How often you'll collect food
- What days and time collections will take place
- Who will visit the store to collect the food
- The types of products and amount you can expect to receive

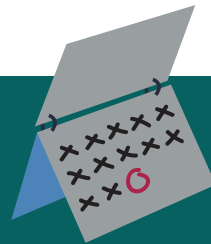
If you are partnered with more than one store, you will need to discuss with each store manager separately. If you haven't heard from your partner store within 2 weeks of this message, please let us know at [foodshare@coop.co.uk](mailto:foodshare@coop.co.uk)



## When can I collect?

Donations will be available every day with 2 different options for collection:

1. Evening collections allow a wider range of fresh food to be donated on the day of expiry. For this you must collect within 2 hours of the store closing and have means to freeze, cook or serve any products with a use by date that evening. You should approach a member of the team and wait at the front of store for collection and may have to wait a few minutes for your donation to be prepared.
2. Following day collections will be for products with a Best Before date only. Collections will be at the back door and you should agree a regular time for collection with the store team.



## What food can I expect?

Co-op Food Share donates food that stores have been unable to sell but are still good to eat. Collections are on an "all or nothing" basis and volumes and variety will change day to day.



### Following day

collections will include products with a best before date, typically:



Bakery Items



Fruit, veg or salad (best before)



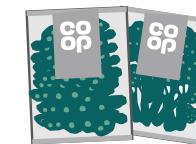
Possibly some longer-life packets, tins or bottled products

### Evening

collections will typically include the products above and possibly some:



Fresh meat



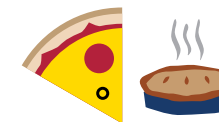
Pre-prepared fruit, veg or salad (use by)



Sandwiches and fresh "food to go"



Dairy products



Prepared meals, pizzas, pies



Eggs

## Our Agreement

Donations will be managed based on the local arrangements you make with our store teams. By registering and signing our Food Donation Agreement, Food Share Partners must handle the food with due care, making sure it is still fit for consumption when served to members of the community.

## More information on Food safety?

Please contact your local authority Environmental Health team who will be able to provide guidance.

## Any further questions?

Please speak to your store in the first instance. If there are further questions or issues with Co-op Food Share please email [foodshare@coop.co.uk](mailto:foodshare@coop.co.uk)